

CONTROL LINER 2020

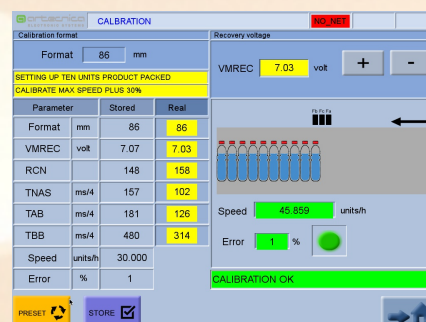
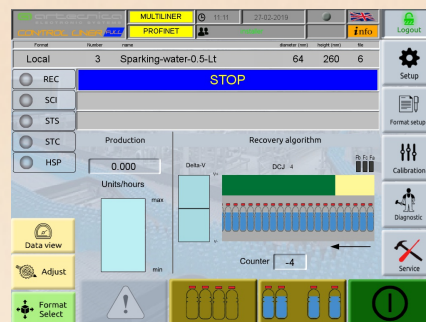


Keypoints

- Automatic control of production lines at high speed
- Regulation algorithms developed to obtain maximum speed with shorter belts
- Management of any type and format of container (glass, plastic, metal)
- Maximum production speed of over 80,000 units / hour
- Low cost models available for low speeds (25,000 units / hour)

Main functions

- It can be used in 3 types of systems: Aligner or bench without pressure,
- Synchronizer with upstream Master and with downstream Master
- Main field buses available: Profibus, Profinet, Ethernet/IP
- Use of low cost standard sensors
- Graphic interface with 10" LCD display with touch screen
- Up to 30 production formats
- Simple configuration, installation and startup
- User messages in 8 languages easily expandable
- Alarm and warning events database
- Graphic animation for algorithms and calibration
- Setup, adjustment and calibration data on exportable micro SD card
- Backup via USB disk of setup and calibration data
- Automatic push ejector online
- Users login via RFID card (option)
- Automatic function to restore application and software
- Customizable display graphics (option)

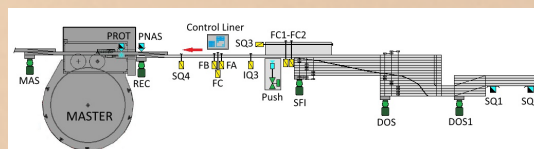


Service

- Automatic system calibration
- Real time calibration and fine-tuning for single format
- Online diagnostics and service functions for software updates
- Implemented field network NSS security protocol
- Solid IP65 container with book opening to facilitate installation and testing
- Digital user manual in 2 languages (english, italian)

Maintenance

- Over 1500 units installed world wide
- Free online assistance
- Startup support on field
- Technical training on factory and c / o customer
- Spare parts available in 24h



artecnica electronic systems
 via Vivaldi 2 Cadorago (CO)
 tel: +39 031 929126
 website: www.artecnica.net

Over 30 years of experience in the field of automatic control



New performances CONTROL LINER 2020

10 inch color graphic lcd display with touch screen	
Storage of setup and calibration data on micro SD card	
Independent setup parameters management for Aligner and Synchronizer	
Users and password management according to security standards	
Users management via RFID card	option
Standard database for managing alarm and warning events	
Main field networks: Profinet, Profibus, Ethernet/IP	
Realtime graphic animation for algorithms and calibration	
Recovery of setup and calibration data via exportable micro SD	
Management of up to 30 production formats	
Local or remote format change via network field	
Clogging managed via polling and interrupt independently	
Adjust for each format and for all parameters	
Automatic online diagnostics	
Automatic data backup and software restore functions	
Real time display of all inputs and outputs	
Extension of the current 8 languages with a simple procedure	option
Network Security System (NSS) protocol for network security	
Trend algorithms and production management	option
Customizable lcd display graphics with user logo	option

Model CONTROL LINER 2020

Code	Description	Release Hmi-CL
CL2020_FULL_PROBUS	Control Liner Profibus version	2.14-1.15
CL2020_LIGHT_PROBUS	Control Liner Profibus Light version	2.14-1.15
CL2020_FULL_PRONET	Control Liner Profinet version	2.14-1.15
CL2020_LIGHT_PRONET	Control Liner Profinet Light version	2.14-1.15
CL2020_FULL_ETHIP	Control Liner Ethernet/IP version	2.14-1.15
CL2020_LIGHT_ETHIP	Control Liner Ethernet/IP Light version	2.14-1.15

Who is Artecnic

- Artecnic boasts over 30 years of experience in the design and electronic production of industrial machines using various architectures with up-to-date technologies.
- Expertise, design, implementation, assistance, training and maintenance.
- Reliable partner for any electronic and IT need for modern companies.